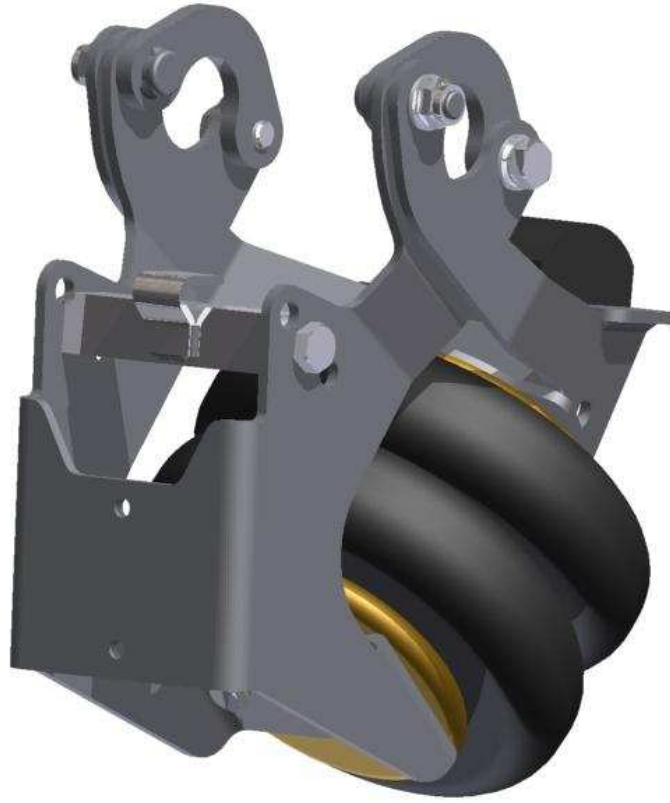


Acceval EBP-8



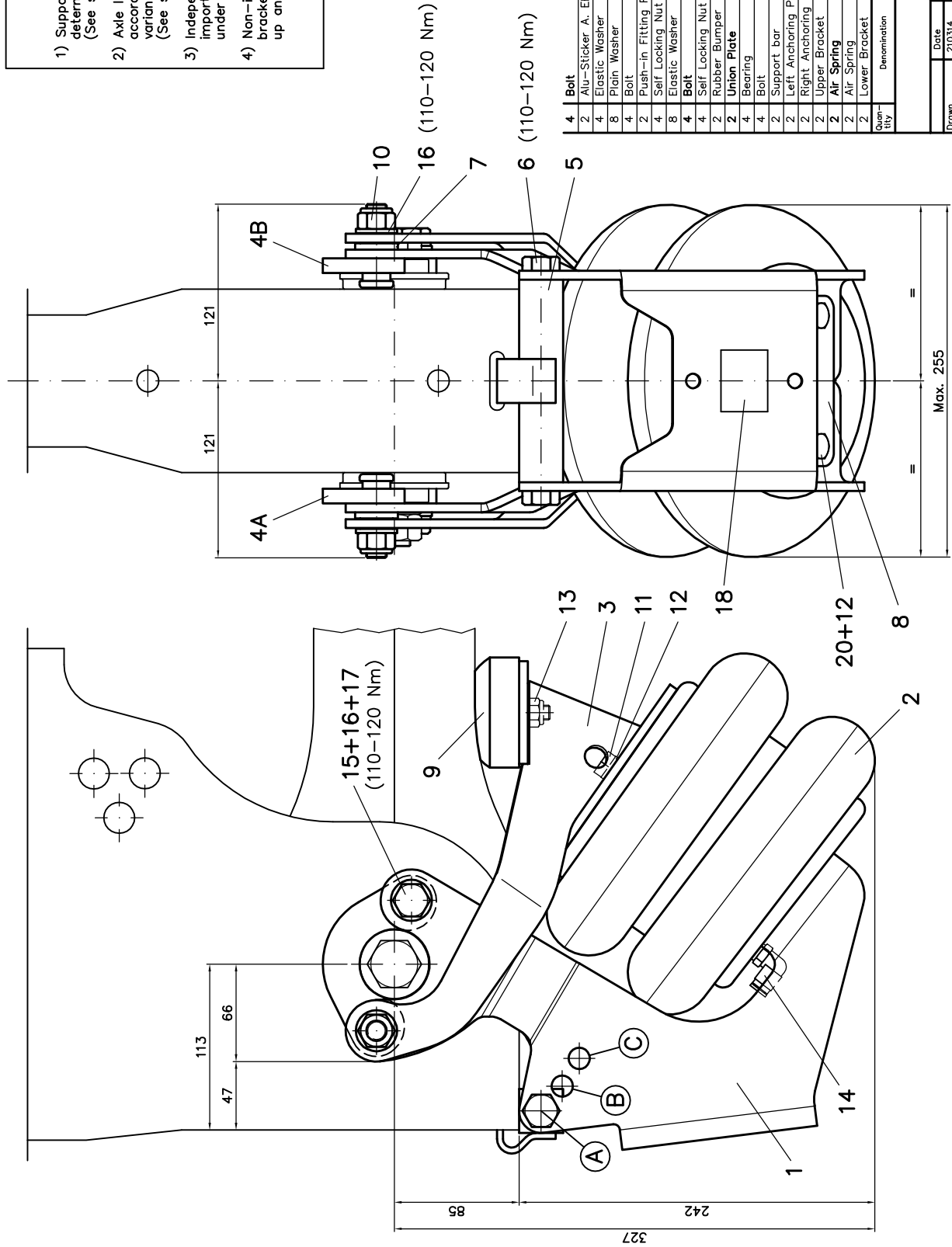
Axle Lift Kit for
Mercedes DCA
Suspensions

Quick Assembly

INSTALLATION NOTES

- 1) Support bar (5) position has to be previously determined according to the used suspension variant. (See separate document)
- 2) Axle lift kit utilization has to be previously verified according to the used combination between suspension variant and wheels dimensions. (See separate document)
- 3) Independently of the used installation sequence, it is very important that support bar (5) has to be perfectly resting under the hanger bracket base.
- 4) Non-interference between axle lift parts and hanger bracket bracing has to be verified (when lift axle is up and down, and for each different model of vehicle).

MAX. OPERATING AIR PRESSURE 8 BAR



| 4 | Bolt | 20 | A/R. M10x1,5xL=30 | DIN933 10.9 Geomet | EBK6-20C |
|---------------|-------------------------|-------|-------------------|--------------------|----------|
| 2 | Alu-Stacker A. EBP-8 | 18 | A/R. | DIN127 S.S. A4 | EBP8-1B |
| 4 | Elastic Washer | 17 | A/R. M14 | EBM9-17B | |
| 8 | Plain Washer | 16 | A/R. M14 | EBM9-16B | |
| 4 | Bolt | 15 | A/R. M14x2,0xL=25 | DIN933 10.9 Geomet | EBN8-15C |
| 4 | Push-in Fitting R1/4-1B | 14 | A/R. NORGREEN | 101470828 | EDD1-14 |
| 4 | Self Locking Nut | 13 | A/R. M10x1,5 | DIN985 S.S. A4 | EDD1-21B |
| 8 | Elastic Washer | 12 | A/R. M10 | DIN127 S.S. A4 | EDD1-22B |
| 4 | Bolt | 11 | A/R. M10x1,5xL=25 | DIN933 10.9 Geomet | EDD1-20C |
| 4 | Self Locking Nut | 10 | A/R. M14x2,0 | DIN985 S.S. A4 | EBL8-10B |
| 2 | Rubber Bumper | 09 | A/Draw. EBL1-09 | | EBL1-09 |
| 2 | Union Plate | 08 | A/Draw. EBP8-08 | | EBP8-08 |
| 4 | Bearing | 07 | A/Draw. EBL8-07B | | EBL8-07B |
| 4 | Bolt | 06 | A/R. M14x2,0xL=30 | DIN933 10.9 Geomet | EBL8-06C |
| 2 | Support bar | 05 | A/Draw. EBP8-05 | | EBP8-05 |
| 2 | Left Anchoring Plate | 04B | A/Draw. EBP8-04B | | EBP8-04B |
| 2 | Right Anchoring Plate | 04A | A/Draw. EBP8-04A | | EBP8-04A |
| 2 | Upper Bracket | 03 | A/Draw. EBP8-03 | | EBP8-03 |
| 2 | Air Spring | 02 | A/R. ACCEVAL | | EDD1-02D |
| 2 | Air Spring | 02 | A/R. CONITECH | FD200-22 | EDD1-02C |
| 2 | Lower Bracket | 01 | A/Draw. EBP8-01 | | EBP8-01 |
| Over- tily | Denomination | Numb. | Dimensions | Reference | Code |

| Date | Name |
|--------|----------|
| 210314 | A.MORENO |
| 210314 | A.MORENO |
| 210514 | A.MORENO |

Scale

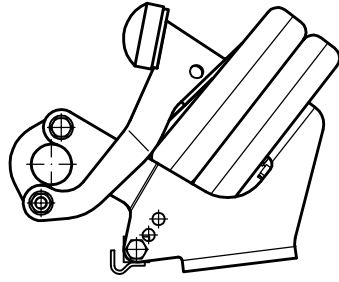
ACCEVAL
ACCESORIOS Y ELEVAADORES VALENCIA, S.L.

AXLE LIFT KIT ADAPTABLE TO MERCEDES DCA SUSPENSIONS
Draw. Numb. **EBP8-00BE**

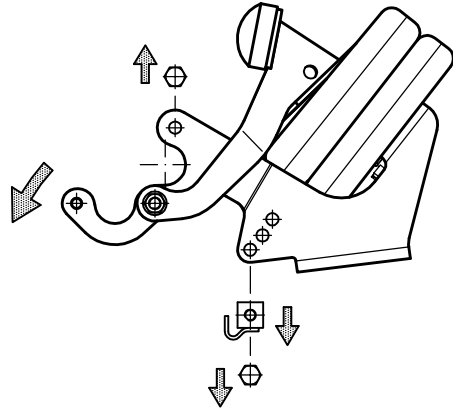
EBP-8

INSTALLATION ON MERCEDES DCA SUSPENSIONS

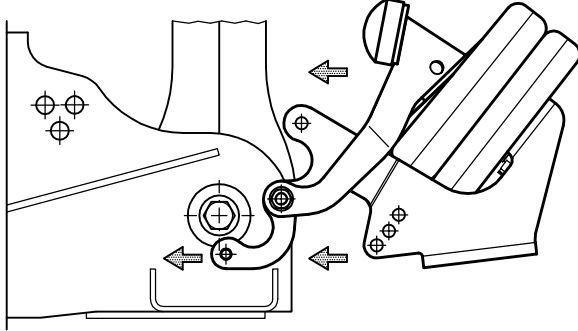
1



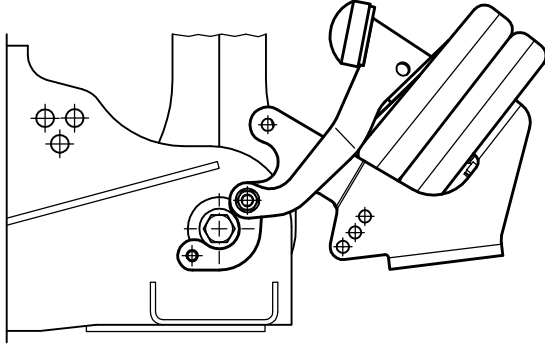
2



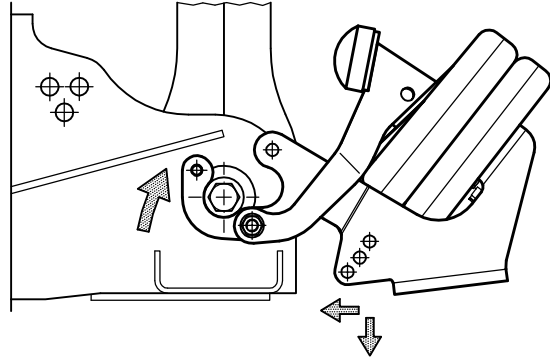
3



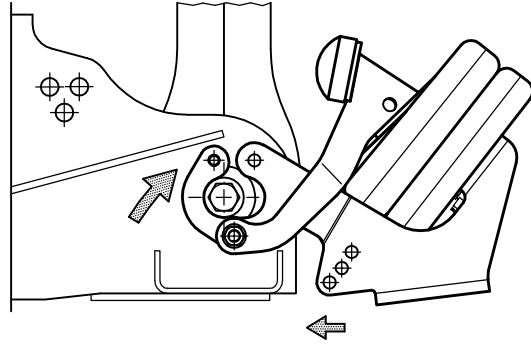
4



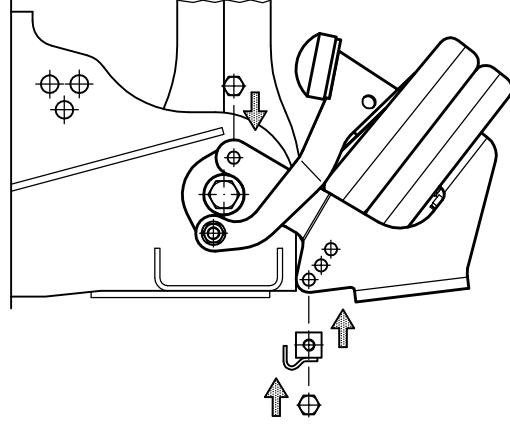
5



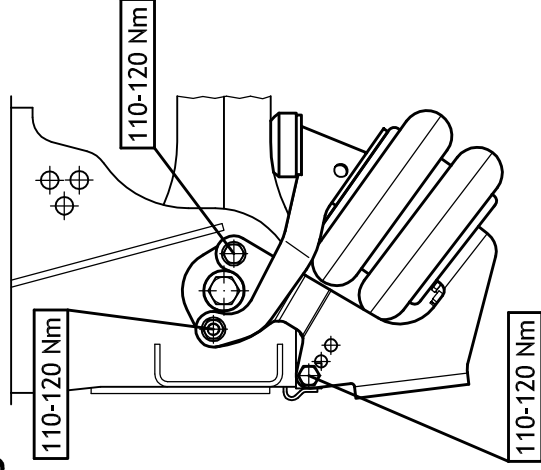
6



7



8



EBP-8

ADJUSTMENT ACCORDING TO SUSPENSION VARIANT

| DCA-1000 | | AXLE LIFT POSITION |
|----------|--|--------------------|
| RH | | |
| 250 | | A |
| 300 | | |
| 350 | | B |
| 400 | | |
| 450 | | |
| 500 | | |

| DCA-1003 | | AXLE LIFT POSITION |
|----------|--|--------------------|
| RH | | |
| 280 | | A |
| 290 | | |
| 315 | | B |
| 340 | | |
| 345 | | A |
| 360 | | |
| 430 | | B |
| 440 | | |
| 460 | | |

| DCA-1005 | | AXLE LIFT POSITION |
|----------|--|--------------------|
| RH | | |
| 250 | | A |
| 275 | | |
| 325 | | |
| 350 | | |
| 400 | | B |
| 425 | | |

| DCA-1010 | | AXLE LIFT POSITION |
|----------|--|--------------------|
| RH | | |
| 270 | | |
| 310 | | B |
| 355 | | |
| 420 | | |
| 450 | | |

| DCA-1016 | | AXLE LIFT POSITION |
|----------|--|--------------------|
| RH | | |
| 380 | | C |
| 400 | | |
| 420 | | |
| 430 | | B |
| 450 | | |
| 470 | | C |

| DCA-1015 | | AXLE LIFT POSITION |
|----------|--|--------------------|
| RH | | |
| 380 | | |
| 400 | | C |
| 420 | | |
| 430 | | B |
| 450 | | |
| 470 | | C |

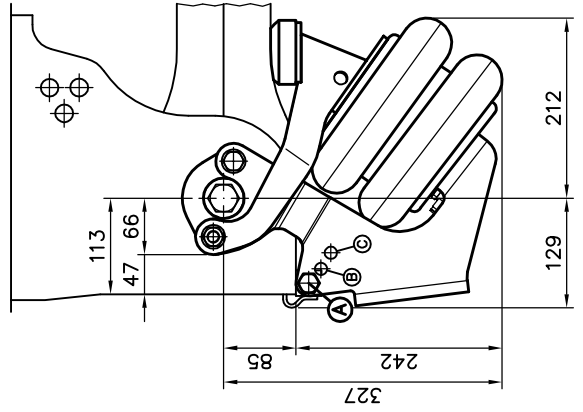
| DCA-1020 | | AXLE LIFT POSITION |
|----------|--|--------------------|
| RH | | |
| 350 | | B |
| 400 | | C |
| 430 | | B |
| 460 | | C |
| 470 | | B |

| DCA-1025 | | AXLE LIFT POSITION |
|----------|--|--------------------|
| RH | | |
| 380 | | |
| 430 | | C |
| 490 | | |
| 510 | | |

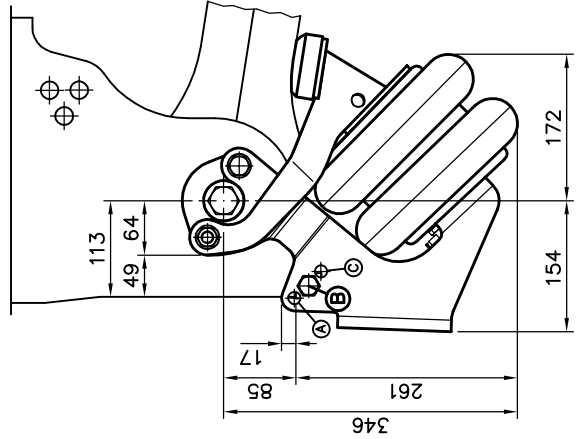
| DCA-1021 | | AXLE LIFT POSITION |
|----------|--|--------------------|
| RH | | |
| 350 | | B |
| 400 | | C |
| 430 | | B |
| 460 | | C |
| 470 | | B |

| DCA-1029 | | AXLE LIFT POSITION |
|----------|--|--------------------|
| RH | | |
| 380 | | |
| 430 | | C |
| 490 | | |
| 510 | | |

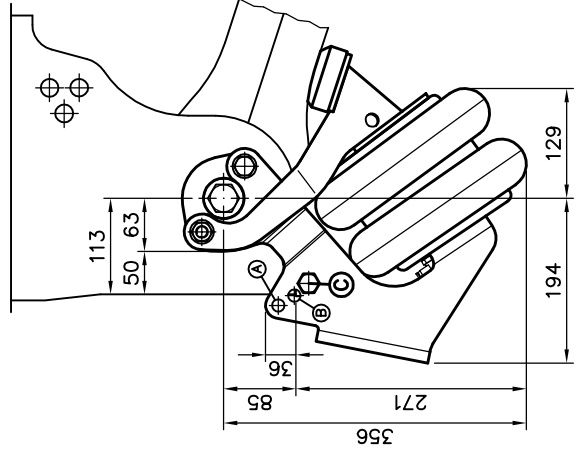
Position "A"



Position "B"



Position "C"



EBP-8

Utilization with DCA-1000/1003/1005/1010 according to wheel dimensions

Minimum Axle Lift Groundclearance (mm): Laden Vehicle and Suspension Without Pressure

| DCA-1000 | 385/65 R22,5" | 385/55 R22,5" | 385/65 R19,5" | 435/50 R19,5" | 445/45 R19,5" | 275/70 R22,5" | 265/70 R19,5" |
|----------|---------------|---------------|---------------|---------------|---------------|---------------|---------------|
| | 70 | (40) | (31) | (-1) | (-9) | (26) | (-23) |
| RH | 90 | 60 | 51 | (19) | (11) | (46) | (-3) |
| | 142 | 112 | 103 | 71 | 63 | 98 | (49) |
| | 127 | 97 | 88 | 56 | (48) | 83 | (34) |
| | 99 | 69 | 60 | (28) | (20) | 55 | (6) |
| | 145 | 115 | 106 | 74 | 66 | 101 | 52 |

| DCA-1003 | 385/65 R22,5" | 385/55 R22,5" | 385/65 R19,5" | 435/50 R19,5" | 445/45 R19,5" | 275/70 R22,5" | 265/70 R19,5" |
|----------|---------------|---------------|---------------|---------------|---------------|---------------|---------------|
| | 97 | 67 | 58 | (26) | (18) | 53 | (4) |
| RH | 106 | 76 | 67 | (35) | (27) | 62 | (13) |
| | 119 | 89 | 80 | (48) | (40) | 75 | (26) |
| | 169 | 139 | 130 | 98 | 90 | 125 | 76 |
| | 86 | 56 | (47) | (15) | (7) | (42) | (-7) |
| | 101 | 71 | 62 | (30) | (22) | 57 | (8) |
| | 139 | 109 | 100 | 68 | 60 | 95 | (46) |
| | 155 | 125 | 116 | 84 | 76 | 111 | 62 |
| | 126 | 96 | 87 | 55 | (47) | 82 | (33) |

| DCA-1005 | 385/65 R22,5" | 385/55 R22,5" | 385/65 R19,5" | 435/50 R19,5" | 445/45 R19,5" | 275/70 R22,5" | 265/70 R19,5" |
|----------|---------------|---------------|---------------|---------------|---------------|---------------|---------------|
| | 76 | (46) | (37) | (5) | (-3) | (32) | (-17) |
| RH | 87 | 57 | (48) | (16) | (8) | (43) | (-6) |
| | 76 | (46) | (37) | (5) | (-3) | (32) | (-17) |
| | 147 | 117 | 108 | 76 | 68 | 103 | 54 |
| | 107 | 77 | 68 | (36) | (28) | 63 | (14) |
| | 147 | 117 | 108 | 76 | 68 | 103 | 54 |

| DCA-1010 | 385/65 R22,5" | 385/55 R22,5" | 385/65 R19,5" | 435/50 R19,5" | 445/45 R19,5" | 275/70 R22,5" | 265/70 R19,5" |
|----------|---------------|---------------|---------------|---------------|---------------|---------------|---------------|
| | 86 | 56 | (47) | (15) | (7) | (42) | (-7) |
| RH | 103 | 73 | 64 | (32) | (24) | 59 | (10) |
| | 100 | 70 | 61 | (29) | (21) | 56 | (7) |
| | 87 | 57 | (48) | (16) | (8) | (43) | (-6) |
| | 97 | 67 | 58 | (26) | (18) | 53 | (4) |

Acceval Prescribes a Minimum Groundclearance of 50 mm (See Table).
All Values Below 50 mm are the Responsibility of the Customer.