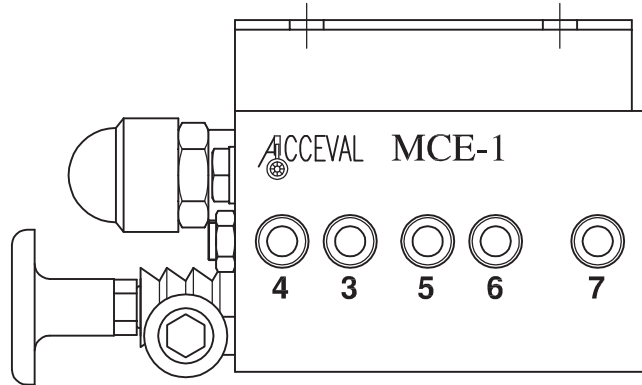


Acceval MCE-1



Lift Axle Control Valve
With Automatic Drop Function

Independent of EBS System

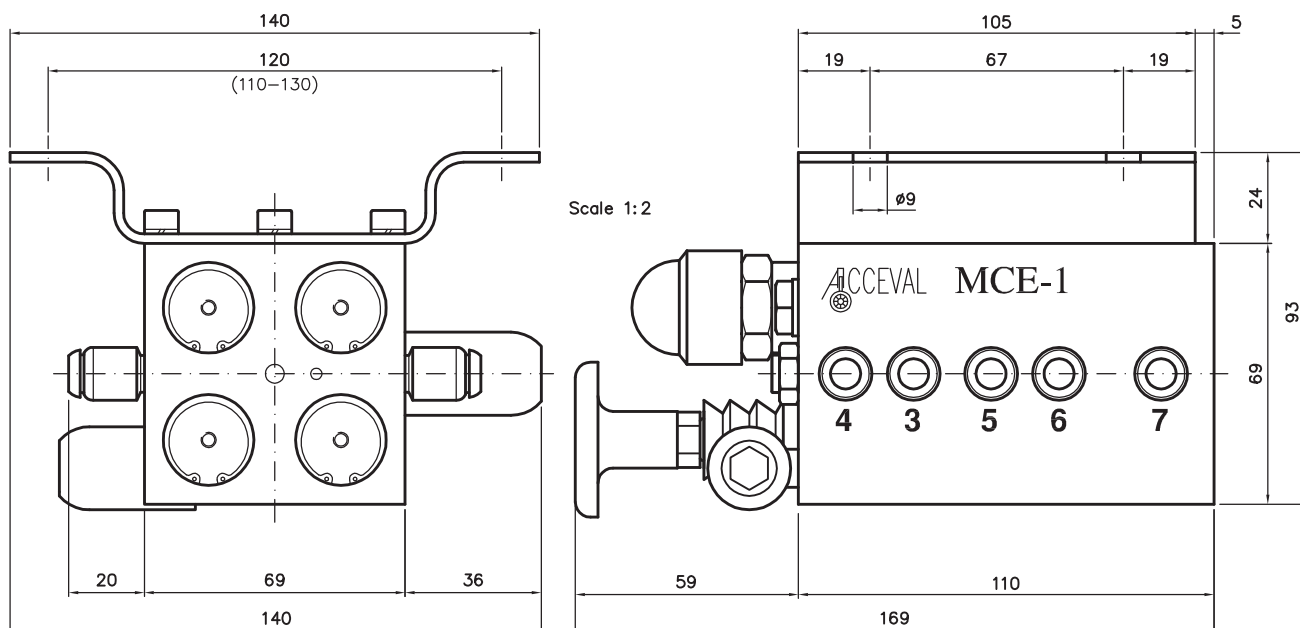
For Suspensions with
Double Circuit

Automatic Drop
and Manual Lifting

ACCEVAL MCE-1

SEMI-AUTOMATIC LIFT AXLE CONTROL VALVE
(Automatic Drop and Manual Lifting)

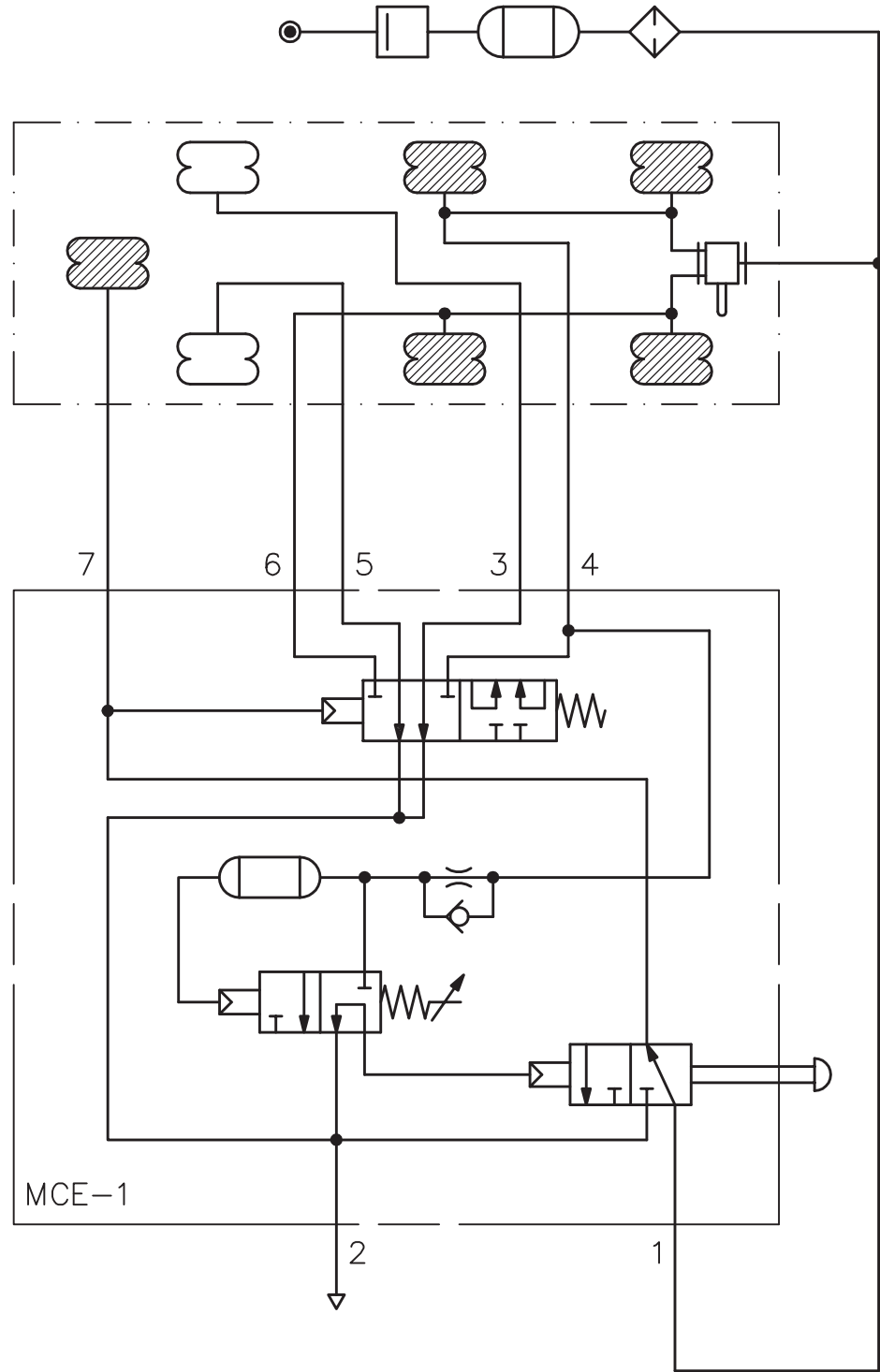
TÜV
Nr. 390-0582-96 FBK/B



SPECIFICATIONS

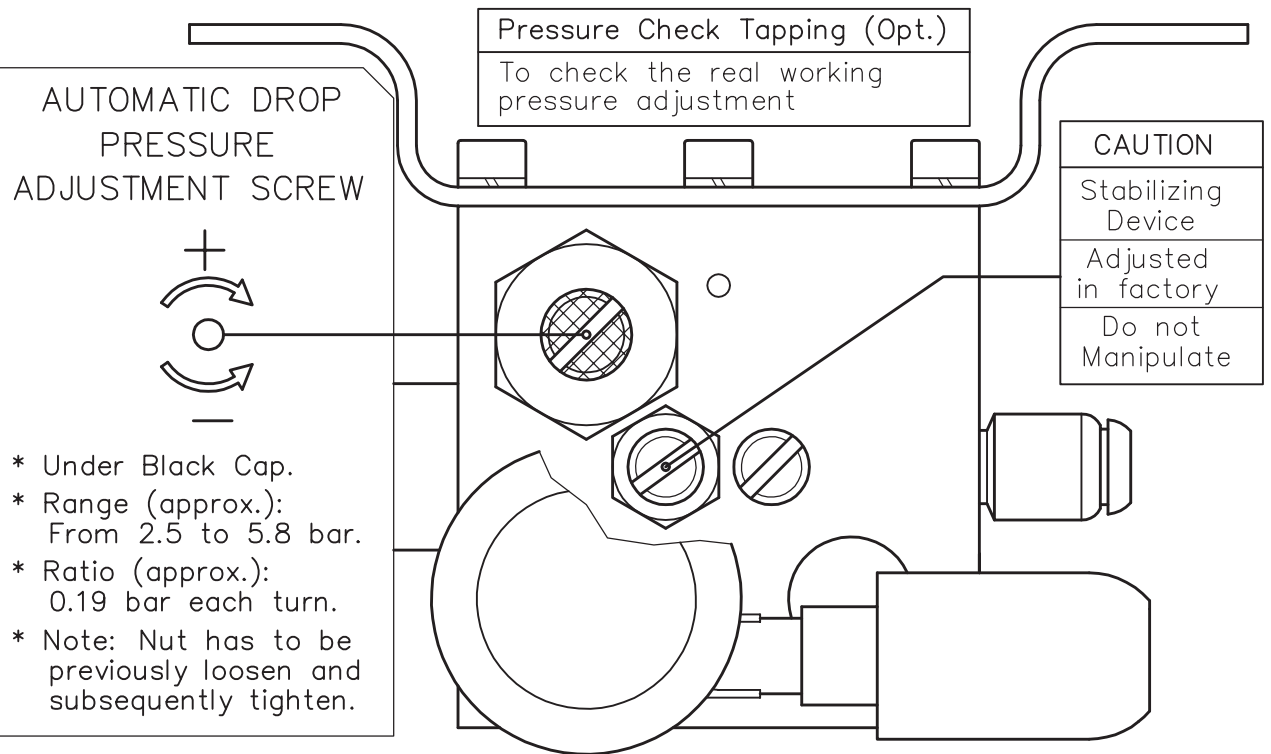
- * Semi-automatic lift axle control valve for double suspension circuit.
- * Manual Drop and Lifting.
- * Automatic Drop.
- * Fluid to use: Filtered air.
- * Max. working pressure: 14 bar.
- * Temperature range: From -35°C to $+80^{\circ}\text{C}$.
- * Automatic drop pressure range:
 - From 2.5 bar to 5.8 bar.
- * Standard fittings:
 - Push-in fittings for 8 mm tube.
- * Pneumatic Scheme and Piping: See separate document.
- * Options:
 - Straight fittings for 10 mm tube.
 - Straight fittings for $3/8$ " tube.
 - Automotive straight fittings for 8 mm tube.
 - Steerable elbow fittings for 8 mm tube.
 - Pressure check tapping.

ACCEVAL MCE-1 PENUMATICAL SCHEME



ACCEVAL MCE-1 ADJUSTMENT SCREWS

AUTOMATIC DROP PRESSURE



ACCEVAL MCE-1 PRACTICAL SETTING VALUES

Automatic drop pressure of MCE-1 valve has to be adjusted according to specific characteristics of the used suspension.

Customers can order MCE-1 valves with the exactly settings, according to load/pressure graph of the used suspension, or they can use a reduced group of practical settings to cover all the different cases, in a functional and safe way (Note: Each case has to be previously calculated and validated).

For MCE-1 valves and vehicles with only one lift axle, we can get it with two different setting values, corresponding to the following two order codes:

A. MCE1-3200

VEHICLE WITH 360 MM SUSPENSION BELLOWS

* Automatic Drop Pressure: 3.2 Bar

B. MCE1-4500

VEHICLE WITH 300 MM SUSPENSION BELLOWS

* Automatic Drop Pressure: 4.5 Bar