

# *Acceval* EBV-8

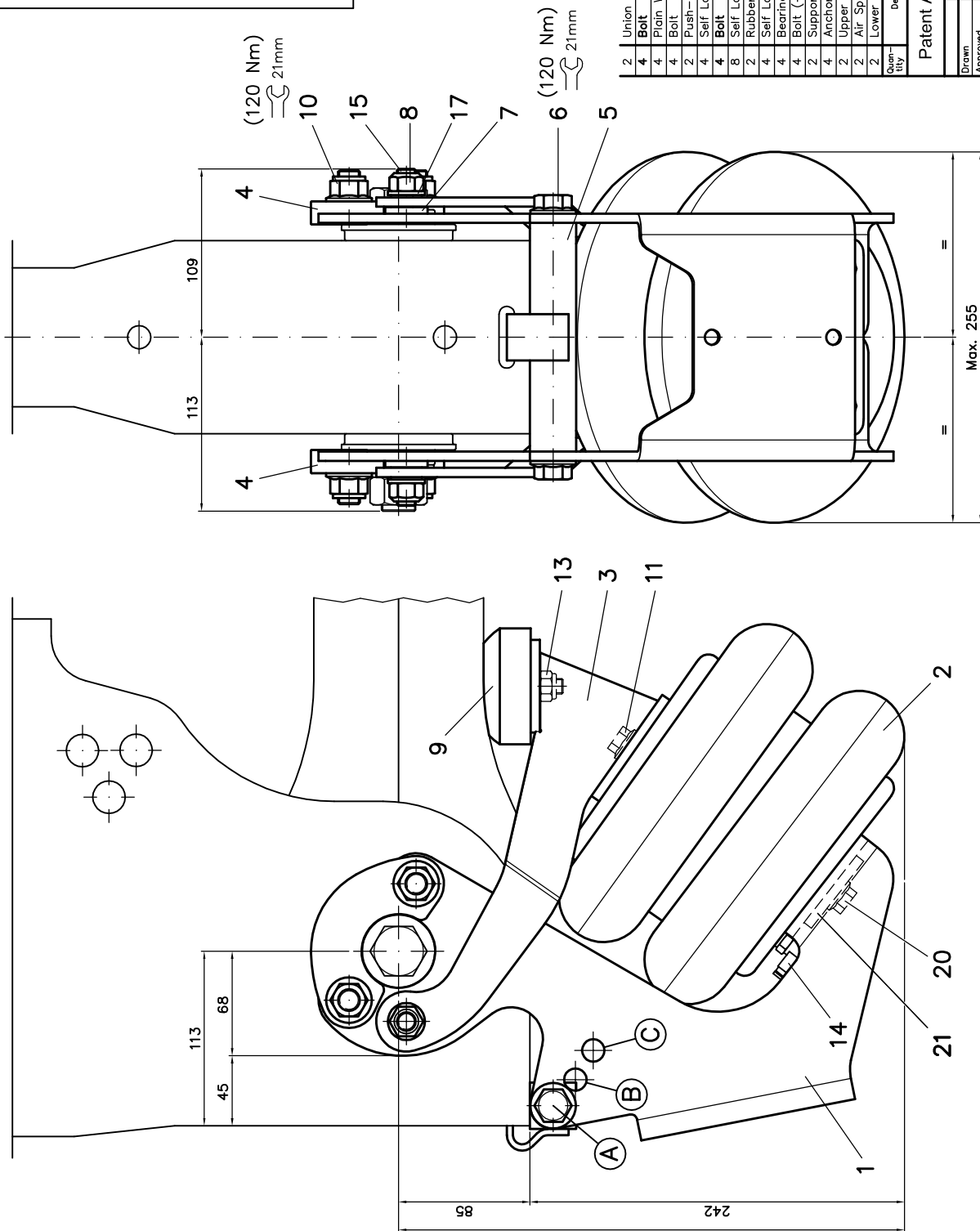


Axle Lift Kit for  
JOST DCA  
Suspensions

### INSTALLATION NOTES

- 1) Support bar (5) position has to be previously determined according to the used suspension variant. (See separate document)
- 2) Axle lift kit utilization has to be previously verified according to the used combination between suspension variant and wheels dimensions. (See separate document)
- 3) Very important: Be sure that both Anchoring Plates (4) are perfectly resting on the minor diameter surface of the alignment discs while the Anchoring Nuts (10) are being tightened.
- 4) Independently of the used installation sequence, it is very important that support bar (5) has to be perfectly resting under the hanger bracket base.
- 5) Non-interference between axle lift parts and hanger bracket bracing has to be verified (when lift axle is up and down, and for each different model of vehicle).

**MAX. OPERATING AIR PRESSURE 8.5 BAR**



Part No.	Description	Quantity	Material	Reference
2	Union Plate	21	A/Draw. EBV8-21	EBV8-21
4	Bolt	20	A/R. M10x1,5xL=30	DIN6921 10.9 Geom. EBK8-20D
4	Plain Washer	17	A/R. M12	DIN125 Geomet EDD1-09C
4	Bolt	15	A/R. M12x1,75xL=35	DIN7991 10.9 Geom. EBN5-05
2	Push-in Fitting R1/4"-T8	14	A/R. NORGREN	101470828 EDD1-14
4	Self Locking Nut	13	A/R. M10x1,5	DIN985 C.10 Geomet EDD1-21C
4	Bolt	11	A/R. M10x1,5xL=25	DIN6921 10.9 Geom. EDD1-20D
8	Self Locking Nut	10	A/R. M14x2,0	DIN6927 C.10 Geom. EBT8-10
2	Rubber Bumper	09	A/Draw. EBL1-09	EBL1-09
4	Self Locking Nut	08	A/R. M12x1,75	DIN980 Geomet EBR4-08
4	Bearing	07	A/Draw. EB04-07B	EB04-07B
4	Bolt (+Estop)	06	A/R. M14x2,0xL=30	EN1685:1997 10.9 Geom. EBT8-06
2	Support bar	05	A/Draw. EBV8-05	EBV8-05
4	Anchoring Plate	04	A/Draw. EBV8-04	EBV8-04
2	Upper Bracket	03	A/Draw. EBV8-03	EBV8-03
2	Air Spring	02	A/R. ACCEVAL	EDD1-02D
2	Lower Bracket	01	A/Draw. EBV8-01	EBV8-01
Qty-ty	Denomination	Numb.	Dimensions	Reference
				Code

Patent Acceval: EP 2 930 089 A1

Date	Name
12/09/18	A.MORENO
12/09/18	A.MORENO
05/21/18	A.MORENO

Scale

**ACCEVAL**  
ACCESORIOS Y ELEVAADORES VALENCIA, S.L.

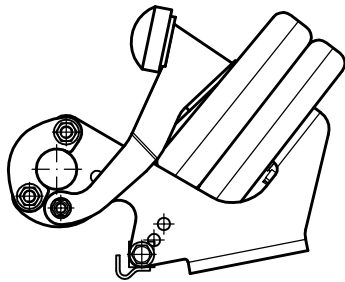
**AXLE LIFT KIT ADAPTABLE TO JUST DCA SUSPENSIONS**

D'raw. Numb. **EBV8-00E**

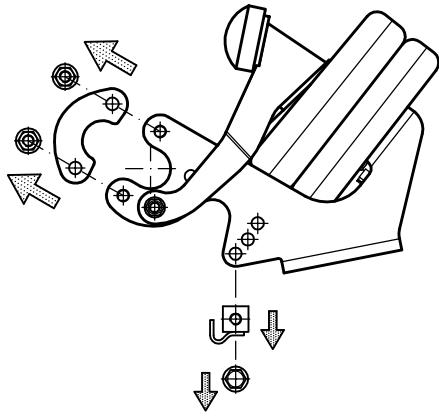
# EBV-8

# INSTALLATION ON JOST DCA SUSPENSIONS

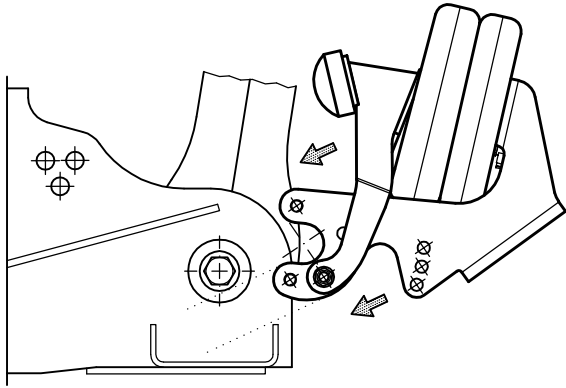
1



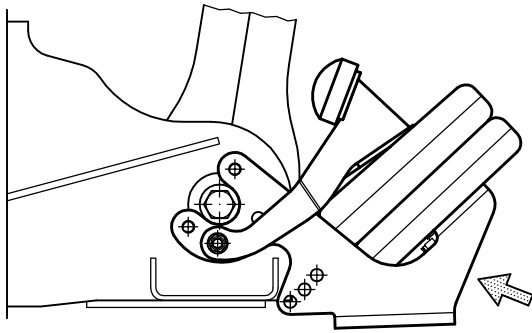
2



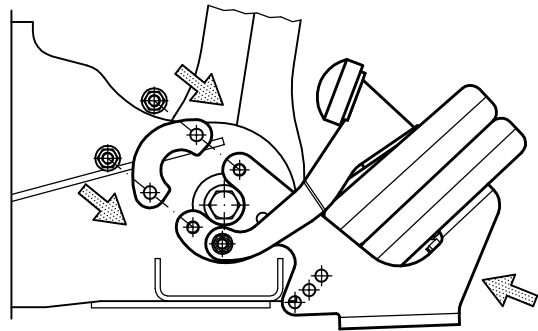
3



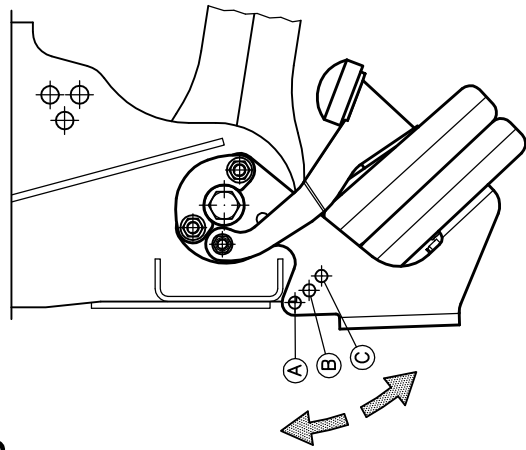
4



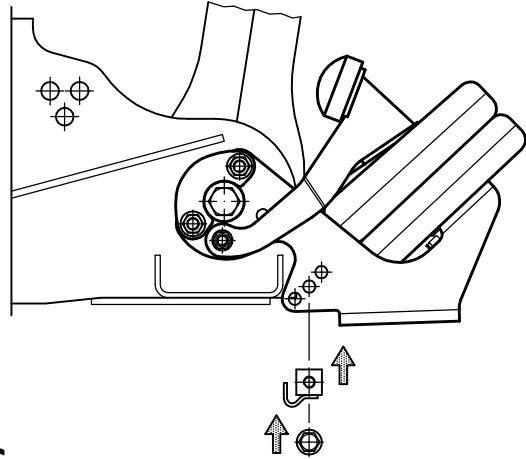
5



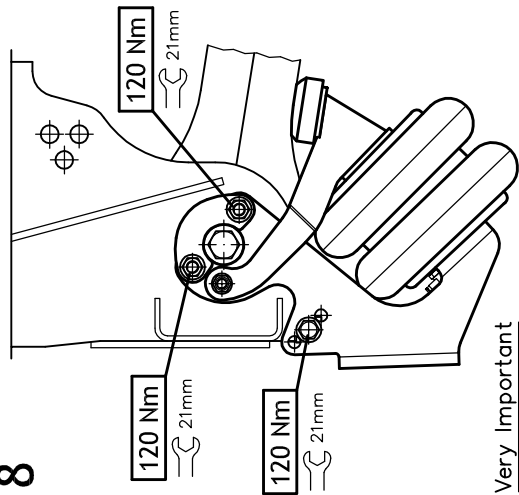
6



7



8



**Very Important**

Both Anchoring Plates must be resting on the minor diameter of alignment discs while the Anchoring Nuts are being tightened.

DCA - 002	
RH	AXLE LIFT POSITION
250	A
280	
290	B
300	
315	
320	A
345	

DCA - 003	
RH	AXLE LIFT POSITION
340	B
350	
360	
400	
430	
440	
450	
460	
500	

DCA - 005	
RH	AXLE LIFT POSITION
250	A
275	
325	

DCA - 006	
RH	AXLE LIFT POSITION
350	B
400	
425	

DCA - 009	
RH	AXLE LIFT POSITION
270	B
310	

DCA - 010	
RH	AXLE LIFT POSITION
355	B
420	
450	

DCA - 012	
RH	AXLE LIFT POSITION
245	B
270	

DCA - 014	
RH	AXLE LIFT POSITION
330	C
400	
460	B

DCA - 015	
RH	AXLE LIFT POSITION
380	C
400	
420	
390	B
430	C
450	
470	

DCA - 016	
RH	AXLE LIFT POSITION
380	C
400	
420	
390	B
430	C
450	
470	

DCA - 017	
RH	AXLE LIFT POSITION
400	C
430	
480	

DCA - 020	
RH	AXLE LIFT POSITION
350	B
400	C
430	B
460	C
470	B

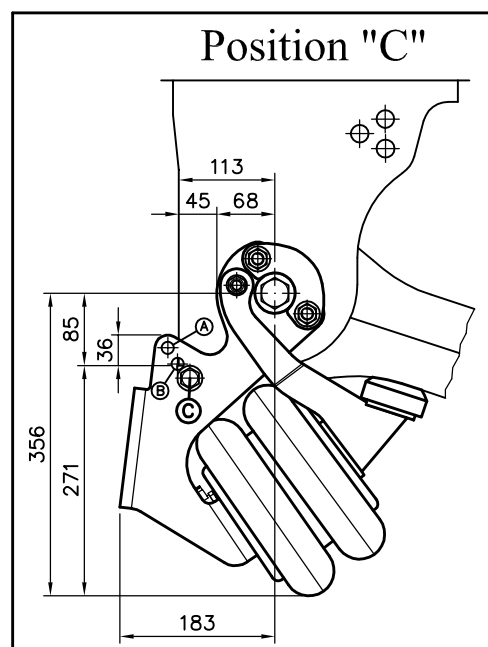
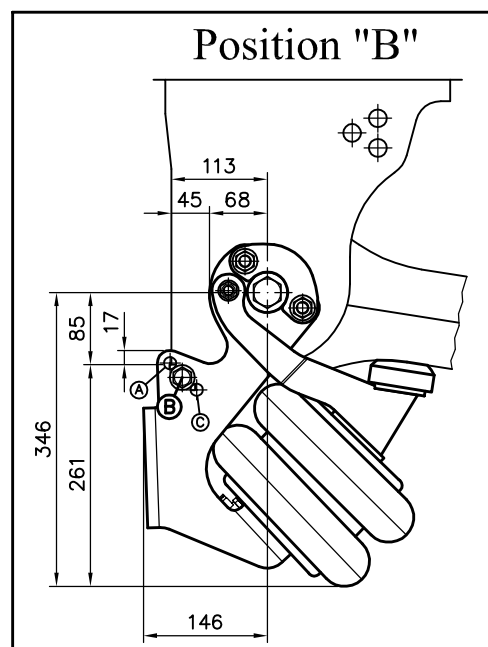
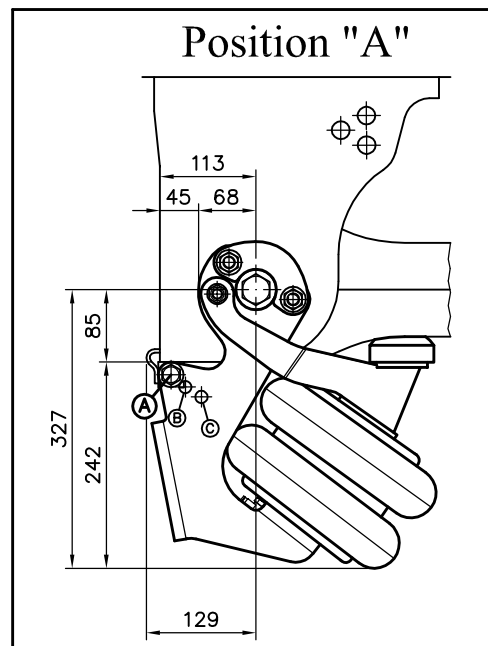
DCA - 021	
RH	AXLE LIFT POSITION
350	B
400	C
430	B
460	C
470	B

DCA - 022	
RH	AXLE LIFT POSITION
390	C
420	
450	
500	
530	

DCA - 025	
RH	AXLE LIFT POSITION
380	C
430	
490	
510	

DCA - 028	
RH	AXLE LIFT POSITION
235	B
320	

DCA - 029	
RH	AXLE LIFT POSITION
380	C
430	
490	
510	



# EBV-8

## Utilization with DCA-002/003/005/006/009/010/012/014 according to wheels dimensions

### Minimum Axle Lift Ground Clearance ( mm ) : Laden Vehicle and Suspension Without Pressure

DCA - 002	385/65 R22,5"	385/55 R22,5"	385/65 R19,5"	435/50 R19,5"	445/45 R19,5"	275/70 R22,5"	265/70 R19,5"
250	70	<40>	<31>	<-1>	<-9>	<26>	<-23>
280	97	67	58	<26>	<18>	53	<4>
290	106	76	67	<35>	<27>	62	<13>
300	90	60	51	<19>	<11>	<46>	<-3>
315	119	89	80	<48>	<40>	75	<26>
320	136	106	97	65	57	92	<43>
345	84	54	<45>	<13>	<5>	<40>	<-9>

DCA - 003	385/65 R22,5"	385/55 R22,5"	385/65 R19,5"	435/50 R19,5"	445/45 R19,5"	275/70 R22,5"	265/70 R19,5"
340	169	139	130	98	90	125	76
350	142	112	103	71	63	98	<49>
360	101	71	62	<30>	<22>	57	<8>
400	127	97	88	56	<48>	83	<34>
430	139	109	100	68	60	95	<46>
440	155	125	116	84	76	111	62
450	99	69	60	<28>	<20>	55	<6>
460	126	96	87	55	<47>	82	<33>
500	145	115	106	74	66	101	52

DCA - 005	385/65 R22,5"	385/55 R22,5"	385/65 R19,5"	435/50 R19,5"	445/45 R19,5"	275/70 R22,5"	265/70 R19,5"
250	76	<46>	<37>	<5>	<-3>	<32>	<-17>
275	87	57	<48>	<16>	<8>	<43>	<-6>
325	76	<46>	<37>	<5>	<-3>	<32>	<-17>

DCA - 006	385/65 R22,5"	385/55 R22,5"	385/65 R19,5"	435/50 R19,5"	445/45 R19,5"	275/70 R22,5"	265/70 R19,5"
350	147	117	108	76	68	103	54
400	107	77	68	<36>	<28>	63	<14>
425	147	117	108	76	68	103	54

Acceval Prescribes a Minimum Ground Clearance of 50 mm ( See Table ) .  
All Values Below 50 mm are the Responsibility of the Customer.

**EBV-8**

Utilization with DCA-002/003/005/006/009/010/012/014 according to wheels dimensions

**Minimum Axle Lift Ground Clearance ( mm ) : Laden Vehicle and Suspension Without Pressure**

DCA - 009	385/65 R22,5"	385/55 R22,5"	385/65 R19,5"	435/50 R19,5"	445/45 R19,5"	275/70 R22,5"	265/70 R19,5"
RH	86	56	<47>	<15>	<7>	<42>	<-7>
	310	73	64	<32>	<24>	59	<10>
DCA - 010	385/65 R22,5"	385/55 R22,5"	385/65 R19,5"	435/50 R19,5"	445/45 R19,5"	275/70 R22,5"	265/70 R19,5"
RH	100	70	61	<29>	<21>	56	<7>
	420	57	<48>	<16>	<8>	<43>	<-6>
	450	67	58	<26>	<18>	53	<4>
DCA - 012	385/65 R22,5"	385/55 R22,5"	385/65 R19,5"	435/50 R19,5"	445/45 R19,5"	275/70 R22,5"	265/70 R19,5"
RH	79	<49>	<40>	<8>	<0>	<35>	<-14>
	270	50					
DCA - 014	385/65 R22,5"	385/55 R22,5"	385/65 R19,5"	435/50 R19,5"	445/45 R19,5"	275/70 R22,5"	265/70 R19,5"
RH	129	99	90	58	50	85	<36>
	400	91	82	50	<42>	77	<28>
	460	82	73	<41>	<33>	68	<19>

Acceval Prescribes a Minimum Ground Clearance of 50 mm ( See Table ) .  
All Values Below 50 mm are the Responsibility of the Customer.