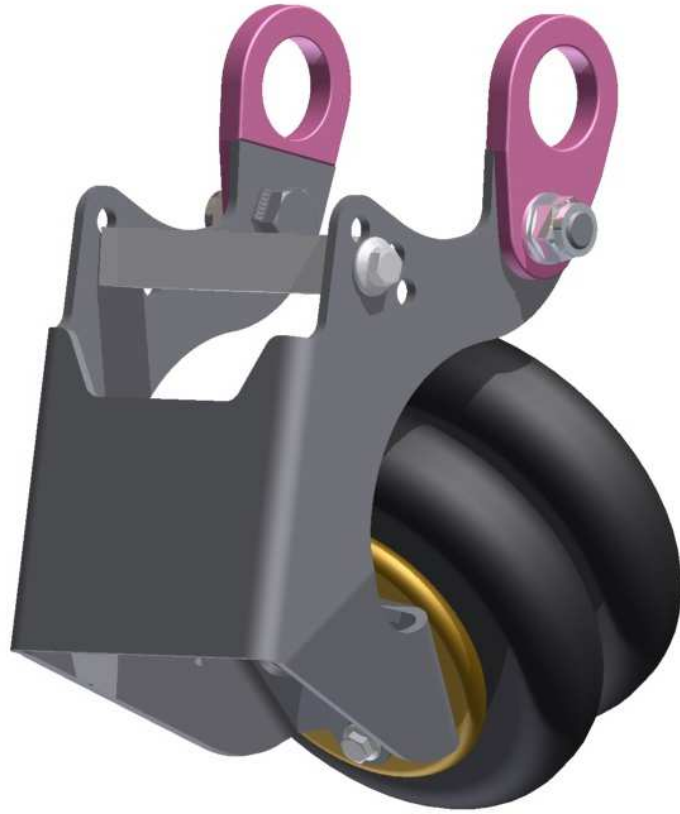


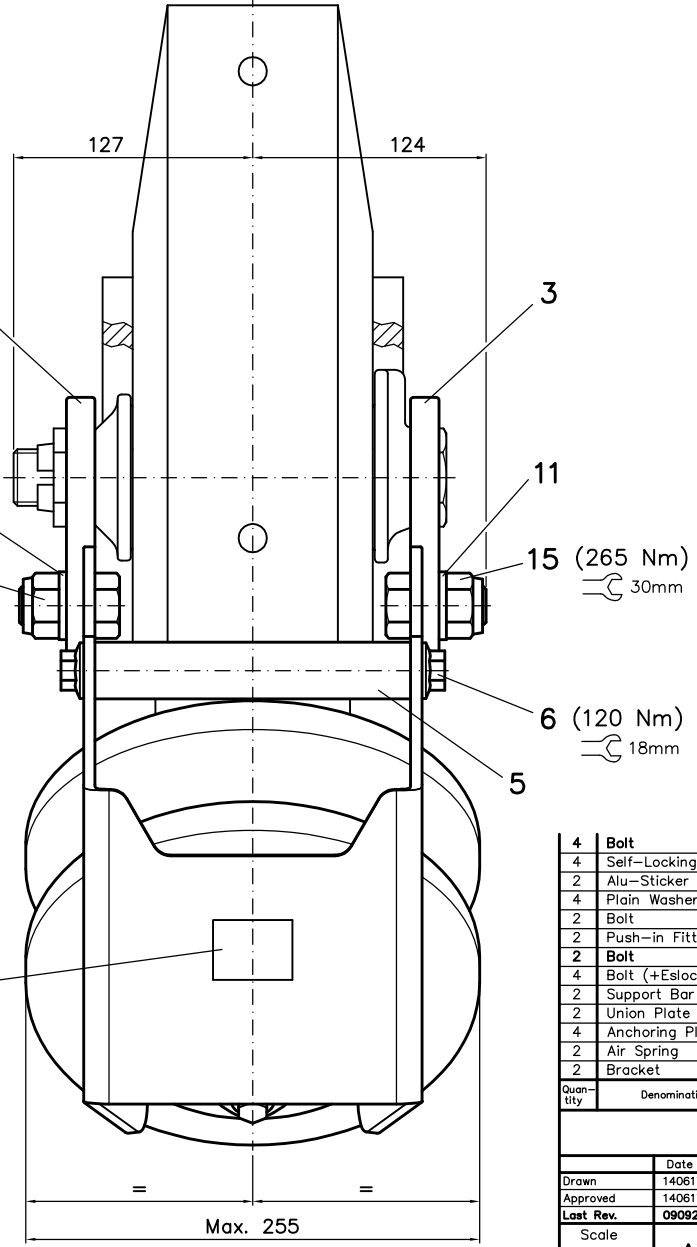
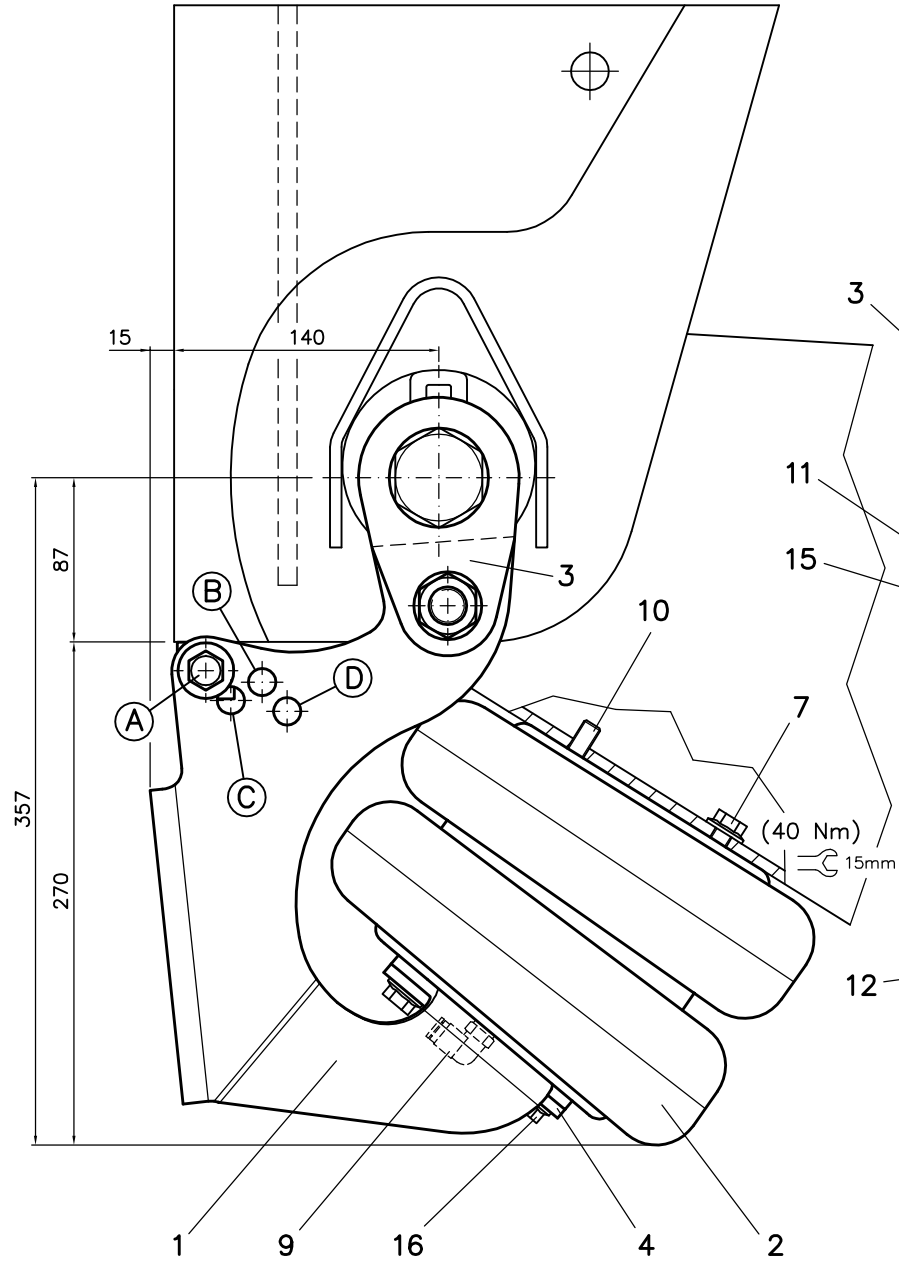
Acceval EBT-6



Axle Lift Kit for
SAF INTRA Series
Suspensions

For Welded or Bolted
Hanger Bracket

Quick Assembly



UTILIZATION OF THIS AXLE LIFT KIT

- * For SAF INTRA Series Suspensions:
+ SAF INTRADISC plus INTEGRAL (IU+IO).
+ SAF INTRADRUM (IU+IO).
- * For Welded or bolted (Screw-On version) "Steel" Hanger Bracket.
- * Not for "Cross Member" Bracket or "Aluminium" Hanger Bracket versions.
- * Utilization with "IU" versions depends on the type of tires (See enclosed document).

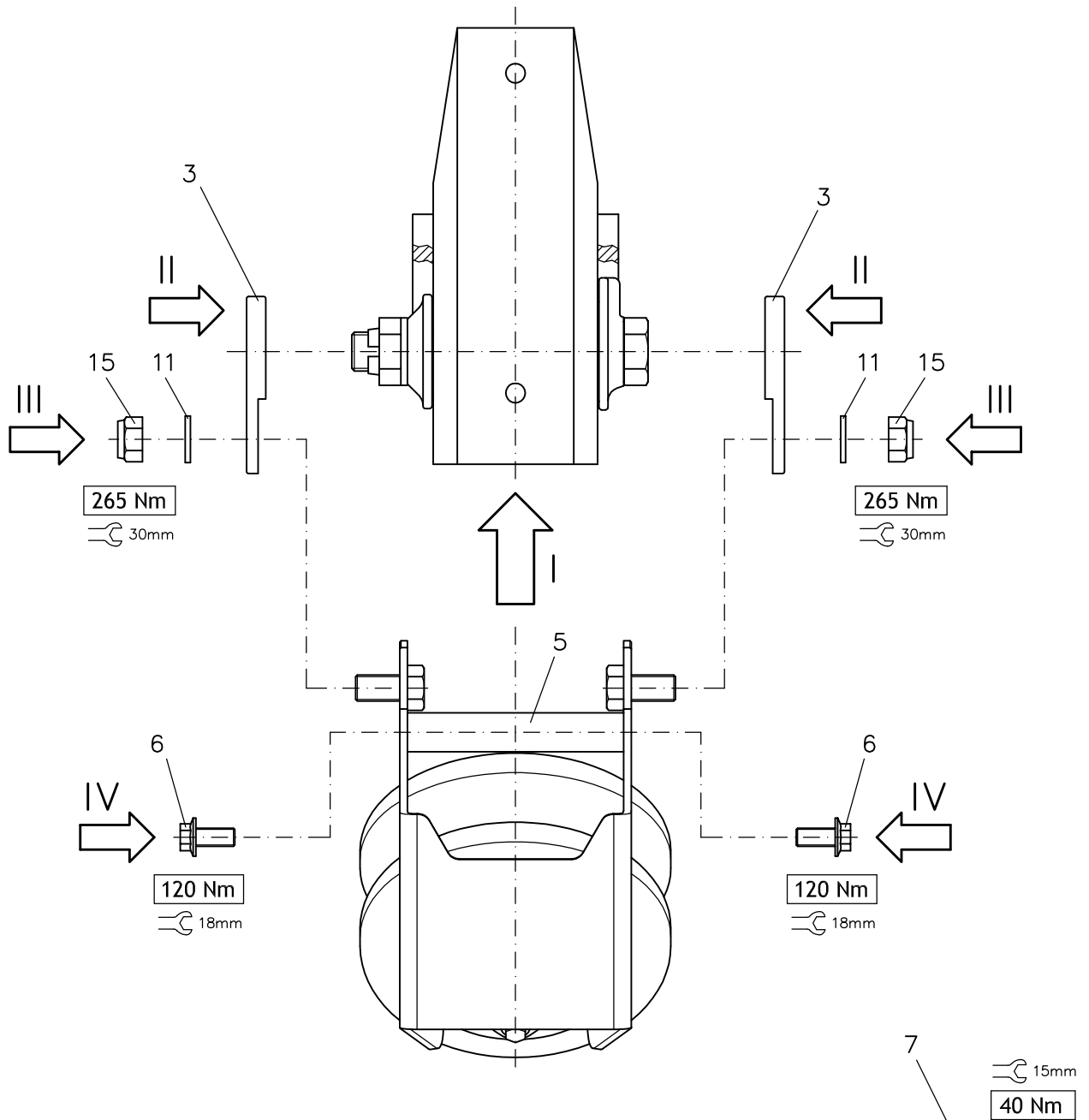
MAX. OPERATING AIR PRESSURE 8.5 BAR

4	Bolt	16	A/R. M10x1,5xL=30	DIN6921 10.9 Geom.	EBK6-20D
4	Self-Locking Nut	15	A/R. M20x2,5	DIN985 S.S. A4	105013E
2	Alu-Sticker A. EBT-6	12	A/R.		EBT6-12
4	Plain Washer	11	A/R. M20	DIN125 S.S. A4	EBN6-11B
2	Bolt	10	A/R. M10x1,5xL=40	DIN916-45H Geomet	EDD6-10B
2	Push-in Fitting R1/4-T8	09	A/R. Norgren	101470828	EDD1-14
2	Bolt	07	A/R. M10x1,5xL=20	DIN6921 10.9 Geom.	EBT6-07
4	Bolt (+Eslock)	06	A/R. M14x2,0xL=30	DIN6921 10.9 Geomet	EBR6-26C
2	Support Bar	05	A/Draw. EBT5-15		EBT5-15
2	Union Plate	04	A/Draw. EBR6-04		EBR6-04
4	Anchoring Plate	03	A/Draw. EBR6-03F		EBR6-03F
2	Air Spring	02	A/R. ACCEVAL		EDD1-02D
2	Bracket	01	A/Draw. EBT6-01		EBT6-01
Quantity	Denomination	Numb.	Dimensions	Reference	Code

Drawn	140617	A.MORENO	ACCEVAL ACCESORIOS Y ELEVADORES VALENCIA, S.L.	Draw. Numb. EBT6-00E
Approved	140617	A.MORENO		
Last Rev.	090820	A.MORENO		
Scale	AXLE LIFT KIT ADAPTABLE TO SAF INTRA SERIES SUSPENSIONS			

ACCEVAL EBT-6

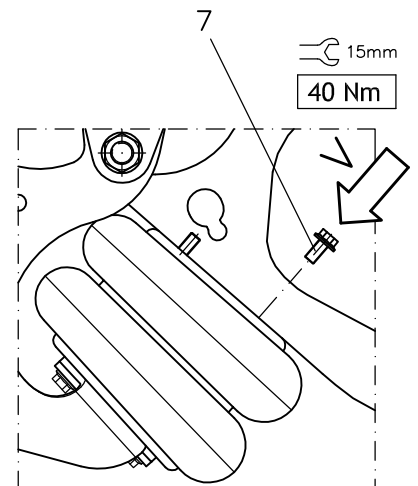
AXLE LIFT KIT ASSEMBLY ON SAF INTRADISC plus INTEGRAL / SAF INTRADRUM



Very Important:

It should be ensured that both anchoring plates [3] are resting on the hexagon of pivot bolt & nut while anchoring nuts [15] are being tightened.

4	Self-Locking Nut	15	A/R. M20x2,5	DIN985 S.S. A4	105013B
4	Plain Washer	11	A/R. M20	DIN125 S.S. A4	EBN6-11B
2	Bolt	07	A/R. M10x1,5xL=20	DIN6921 10.9 Geomet	EBT6-07
4	Bolt (+Eslock)	06	A/R. M14x2,0xL=30	DIN6921 10.9 Geomet	EBR6-26C
2	Support Bar	05	A/Draw. EBT5-15		EBT5-15
4	Anchoring Plate	03	A/Draw. EBR6-03F		EBR6-03F
Quantity	Denomination	Numb.	Dimensions	Reference	Code



Acceval EBT-6

Selection of Support Bar Position

SAF INTRA / Edition 2016-11

Suspension	Position
IU25/2000 33	A
IU28/2005 33	B
IU30/2505 33	A
IU33/2510 33	B
IU35/3010 33	A

Suspension	Position
IU25/2000 42	A
IU28/2005 42	B
IU30/2505 42	A
IU33/2510 42	B
IU35/3010 42	A

Suspension	Position
IU29/2000 41	B
IU31/2500 41	A
IU34/2505 41	B
IU36/3005 41	A
IU39/3010 41	B
IU42/3015 41	C

Suspension	Position
IU30/2000 47	C
IU32/2500 47	B
IU35/2505 47	C
IU37/3005 47	B
IU40/3010 47	C
IU42/3510 47	B

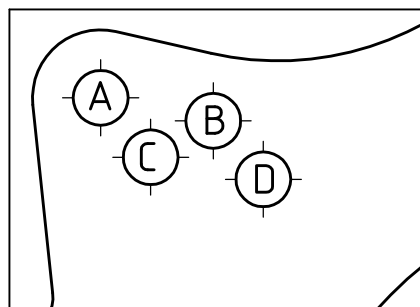
Suspension	Position
IU27/2000 47 V90	B

Suspension	Position
I035/2000 33	D
I037/2500 33	C
I040/2505 33	D
I042/3005 33	C
I045/3010 33	D
I047/3510 33	C
I050/3515 33	D

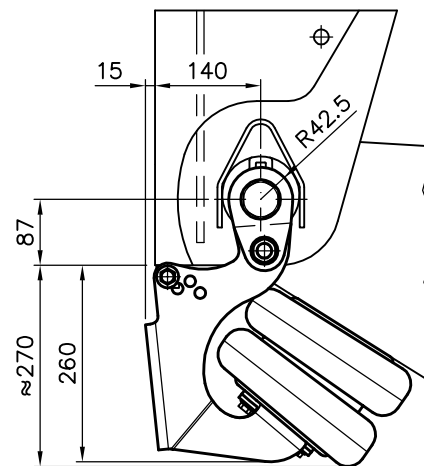
Suspension	Position
I035/2000 42	D
I037/2500 42	C
I040/2505 42	D
I042/3005 42	C
I045/3010 42	D
I047/3510 42	C
I050/3515 42	D

Suspension	Position
I044/3000 41	C
I049/3505 41	C

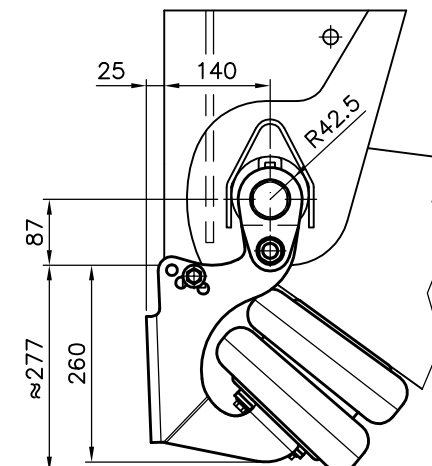
Suspension	Position
I045/3000 47	D
I050/3505 47	D



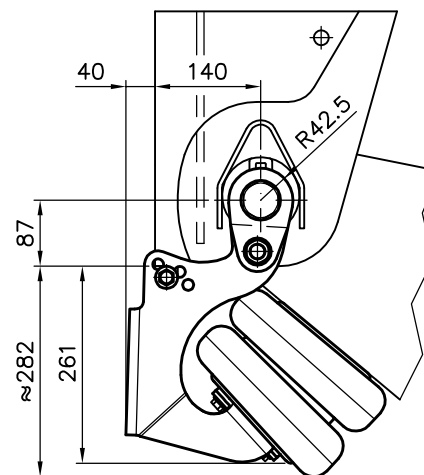
Position "A"



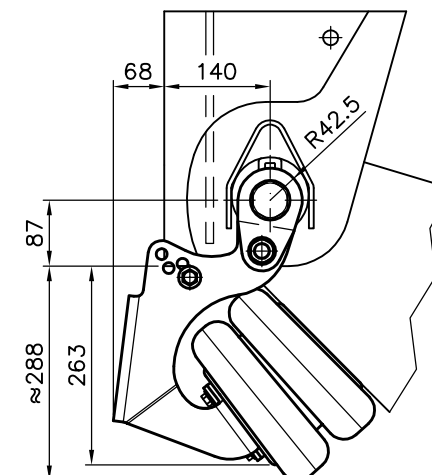
Position "B"



Position "C"



Position "D"



Acceval EBT-6

Utilization with "IU" according to Type of Tires

Minimum Axle Lift Groundclearance (mm): Laden Vehicle and Suspension Without Pressure

	385/65 R22,5"	385/55 R22,5"	385/65 R19,5"	435/50 R19,5"	445/45 R19,5"	275/70 R22,5"	265/70 R19,5"
IU25/2000 33	92	62	53	<21>	<13>	<48>	<-1>
IU28/2005 33	122	92	83	51	<43>	78	<29>
IU30/2505 33	92	62	53	<21>	<13>	<48>	<-1>
IU33/2510 33	122	92	83	51	<43>	78	<29>
IU35/3010 33	92	62	53	<21>	<13>	<48>	<-1>

	385/65 R22,5"	385/55 R22,5"	385/65 R19,5"	435/50 R19,5"	445/45 R19,5"	275/70 R22,5"	265/70 R19,5"
IU25/2000 42	87	57	<48>	<16>	<8>	<43>	<-6>
IU28/2005 42	117	87	78	<46>	<38>	73	<24>
IU30/2505 42	87	57	<48>	<16>	<8>	<43>	<-6>
IU33/2510 42	117	87	78	<46>	<38>	73	<24>
IU35/3010 42	87	57	<48>	<16>	<8>	<43>	<-6>

	385/65 R22,5"	385/55 R22,5"	385/65 R19,5"	435/50 R19,5"	445/45 R19,5"	275/70 R22,5"	265/70 R19,5"
IU29/2000 41	112	82	73	<41>	<33>	68	<19>
IU31/2500 41	82	52	<43>	<11>	<3>	<38>	<-11>
IU34/2505 41	112	82	73	<41>	<33>	68	<19>
IU36/3005 41	82	52	<43>	<11>	<3>	<38>	<-11>
IU39/3010 41	112	82	73	<41>	<33>	68	<19>
IU42/3015 41	135	105	96	64	56	91	<42>

	385/65 R22,5"	385/55 R22,5"	385/65 R19,5"	435/50 R19,5"	445/45 R19,5"	275/70 R22,5"	265/70 R19,5"
IU30/2000 47	130	100	91	59	51	86	<37>
IU32/2500 47	102	72	63	<31>	<23>	58	<9>
IU35/2505 47	130	100	91	59	51	86	<37>
IU37/3005 47	102	72	63	<31>	<23>	58	<9>
IU40/3010 47	130	100	91	59	51	86	<37>
IU42/3510 47	102	72	63	<31>	<23>	58	<9>

	385/65 R22,5"	385/55 R22,5"	385/65 R19,5"	435/50 R19,5"	445/45 R19,5"	275/70 R22,5"	265/70 R19,5"
IU27/2000 47 V90	102	72	63	<31>	<23>	58	<9>

Acceval Prescribes a Minimum Groundclearance of 50 mm (See Table).
All Values Below 50 mm are the Responsibility of the Customer.